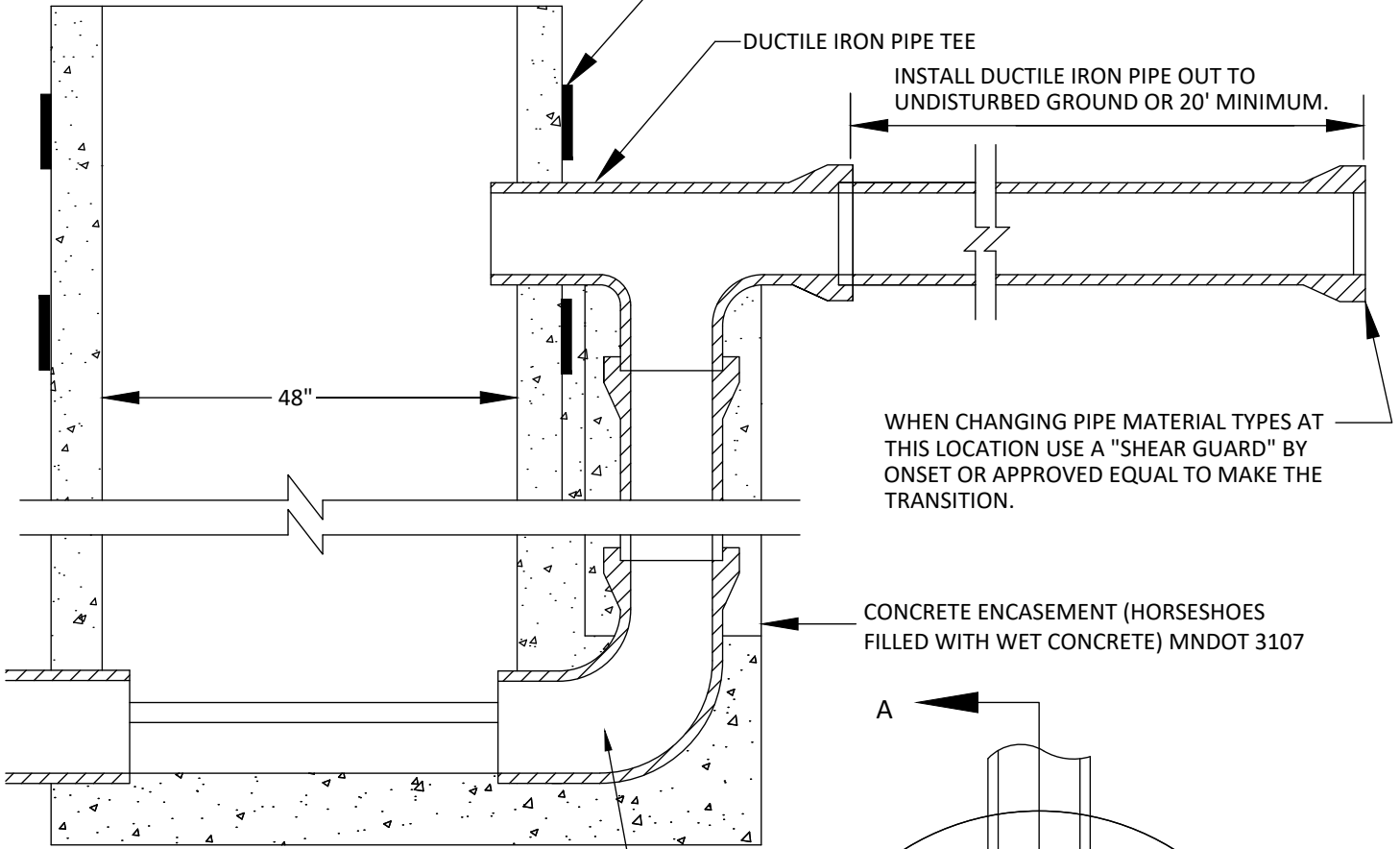


SEE SAN-01 FOR TOP SECTION DETAIL

RUBBER GASKETS BETWEEN EACH JOINT OF MANHOLE SECTION.

DUCTILE IRON PIPE TEE

INSTALL DUCTILE IRON PIPE OUT TO UNDISTURBED GROUND OR 20' MINIMUM.



WHEN CHANGING PIPE MATERIAL TYPES AT THIS LOCATION USE A "SHEAR GUARD" BY ONSET OR APPROVED EQUAL TO MAKE THE TRANSITION.

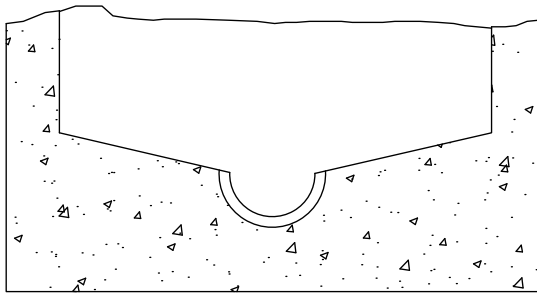
CONCRETE ENCASEMENT (HORSESHOES FILLED WITH WET CONCRETE) MNDOT 3107

SECTION A-A

DUCTILE IRON PIPE BEND

NOTES:

1. HOLES ARE CORE DRILLED ONLY.
2. "KOR N SEAL" BOOT CONNECTIONS OR APPROVED EQUAL.
3. 1/2 DIAMETER OF PIPE IS INVERT SLOPE IN MANHOLE.
4. NO OUTSIDE DROPS ALLOWED.



SECTION B-B

